



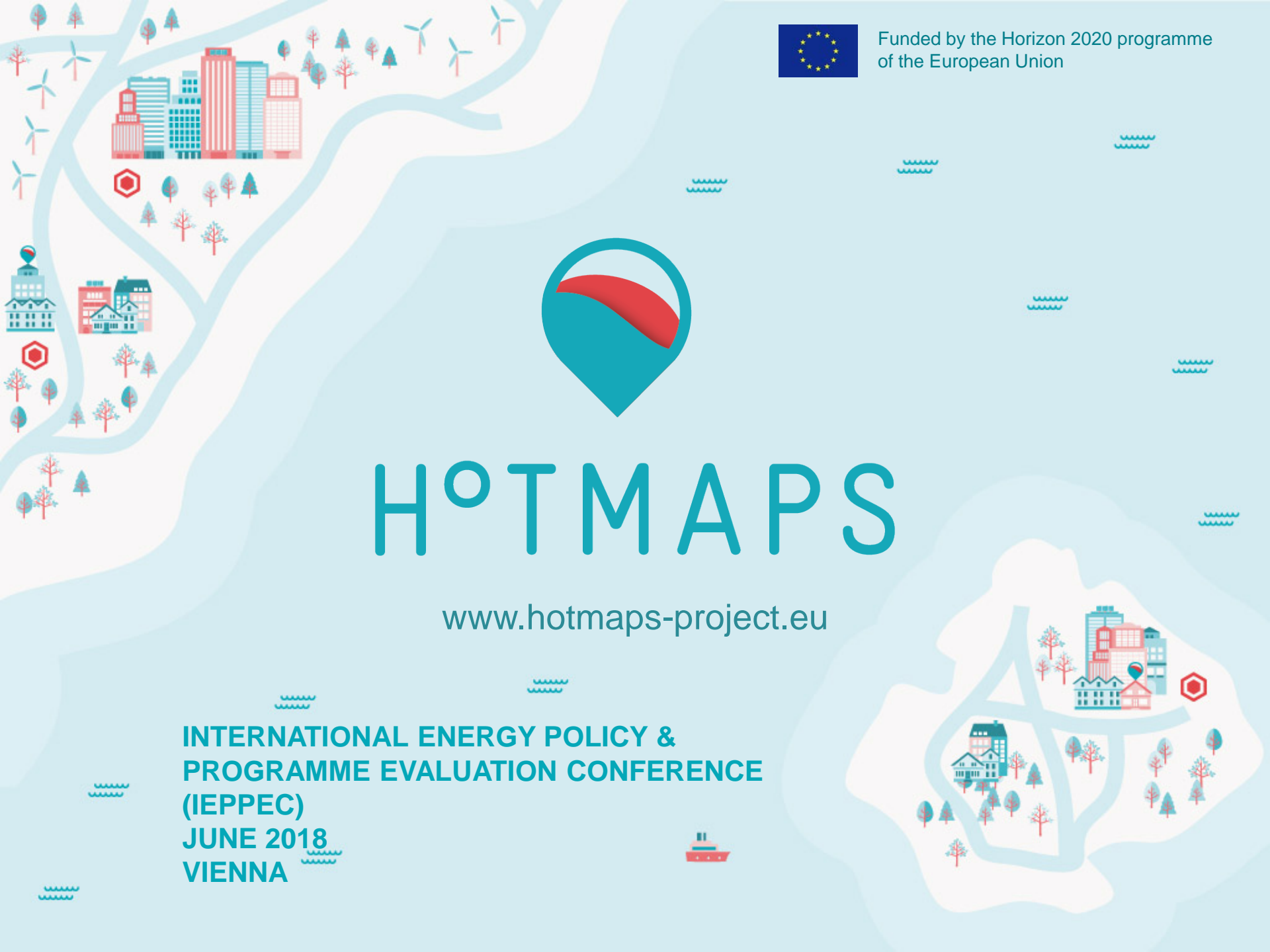
Funded by the Horizon 2020 programme
of the European Union



H^oTMAPS

www.hotmaps-project.eu

**INTERNATIONAL ENERGY POLICY &
PROGRAMME EVALUATION CONFERENCE
(IEPPEC)
JUNE 2018
VIENNA**



The Hotmaps project develops a toolbox that supports heating and cooling mapping and planning processes. Website: www.hotmaps-project.eu



Development of a toolbox that will be:

- **User-driven:** developed in collaboration with pilot areas
- **Open source:** the developed tool will run without requiring any other commercial tool or software and the code will be accessible
- **EU-28 compatible:** the tool will be applicable for cities in all 28 EU Member States

The experts behind the project: 17 partners combining scientific institutions and pilot areas for developing and testing the tool



Hotmaps toolbox – what's in it?



Funded by the Horizon 2020 programme of the European Union

Evaluation of heat load and availability of supply – up to hourly resolution

Go to place...

LAYERS

Buildings

- HEAT DENSITY TOTAL
- HEAT DENSITY RESIDENTIAL SECTOR
- HEAT DENSITY NON-RESIDENTIAL SECTOR
- GROSS FLOOR AREA TOTAL
- GROSS FLOOR AREA RESIDENTIAL
- GROSS FLOOR AREA NON RESIDENTIAL
- BUILDING VOLUMES TOTAL
- BUILDING VOLUMES RESIDENTIAL
- BUILDING VOLUMES NON-RESIDENTIAL

R.E.S. Potential

- Industrial
- Population
- Res Potential

RESULTS

SUMMARY ENERGY STATISTICS

Heat load profiles

2010

Duration curve

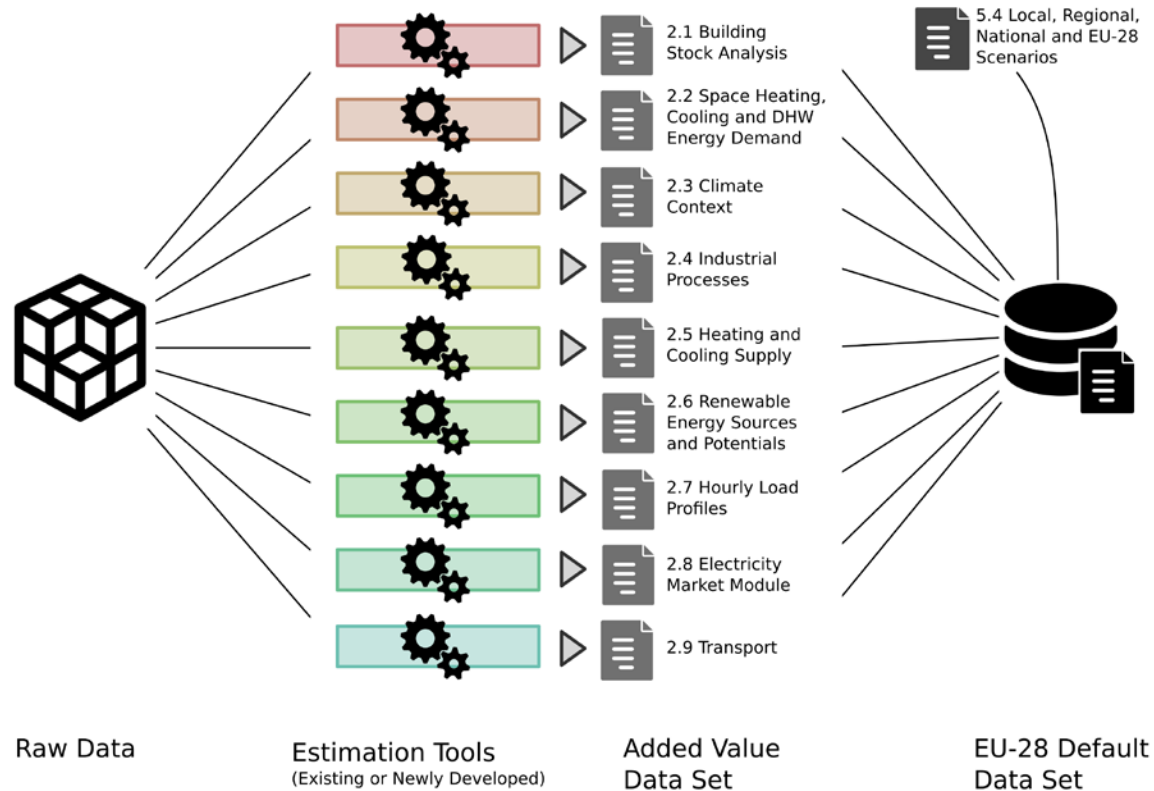
EXPORT

Thermal Power Energymix over year

- Heat Demand
- heat comp. heat pump waste heat 40°
- CHP waste treatment waste
- CHP steam turbine (medium) straw
- heat boiler wood chips
- heat boiler natural gas



Open EU – 28 dataset



📍 All datasets available at:

<https://gitlab.com/hotmaps>

📍 D2.3 WP2 Report – Open Data Set for the EU28:

<http://www.hotmaps-project.eu/library/>



Hotmaps toolbox



Funded by the Horizon 2020 programme of the European Union

- Work in progress..... Beta version to be released end of 2018 – for more information or to register as a beta user please contact: info@hotmaps-project.eu

The screenshot displays the Hotmaps toolbox interface. On the left, the 'LAYERS' panel is visible, with 'Buildings' and 'R.E.S. Potential' sections. Under 'Buildings', 'HEAT DENSITY TOTAL' is selected. Under 'R.E.S. Potential', 'WASTE WATER TREATMENT PLANTS POWER' is selected. The central map shows a satellite view of Vienna, Austria, with a blue circle highlighting a specific area. A 'RESULTS' panel on the right shows a 'Heat energy carrier' bar chart. The chart displays the percentage of energy carriers (Oil, Gas, Heat pump, District heating) for the years 2012, C.M. Renovation, C.M. DH extension, 2020, 2035, and 2050. The y-axis represents the percentage from 0 to 100. The x-axis represents the different scenarios and years. The chart shows a significant increase in District heating and Heat pump usage over time, while Oil and Gas usage decreases.

Year/Scenario	Oil (%)	Gas (%)	Heat pump (%)	District heating (%)
2012	70	10	10	10
C.M. Renovation	70	10	10	10
C.M. DH extension	40	10	10	40
2020	60	10	10	20
2035	35	15	15	35
2050	20	20	20	40