



Funded by the Horizon 2020 programme  
of the European Union



# H<sup>o</sup>TMAPS

[www.hotmaps-project.eu](http://www.hotmaps-project.eu)

29.06.2020 – DAVID WANNIER (HES-SO)  
PIETRO ZABELLI (EURAC)  
ALI AYDEMIR (FRAUNHOFER INSTITUTE)





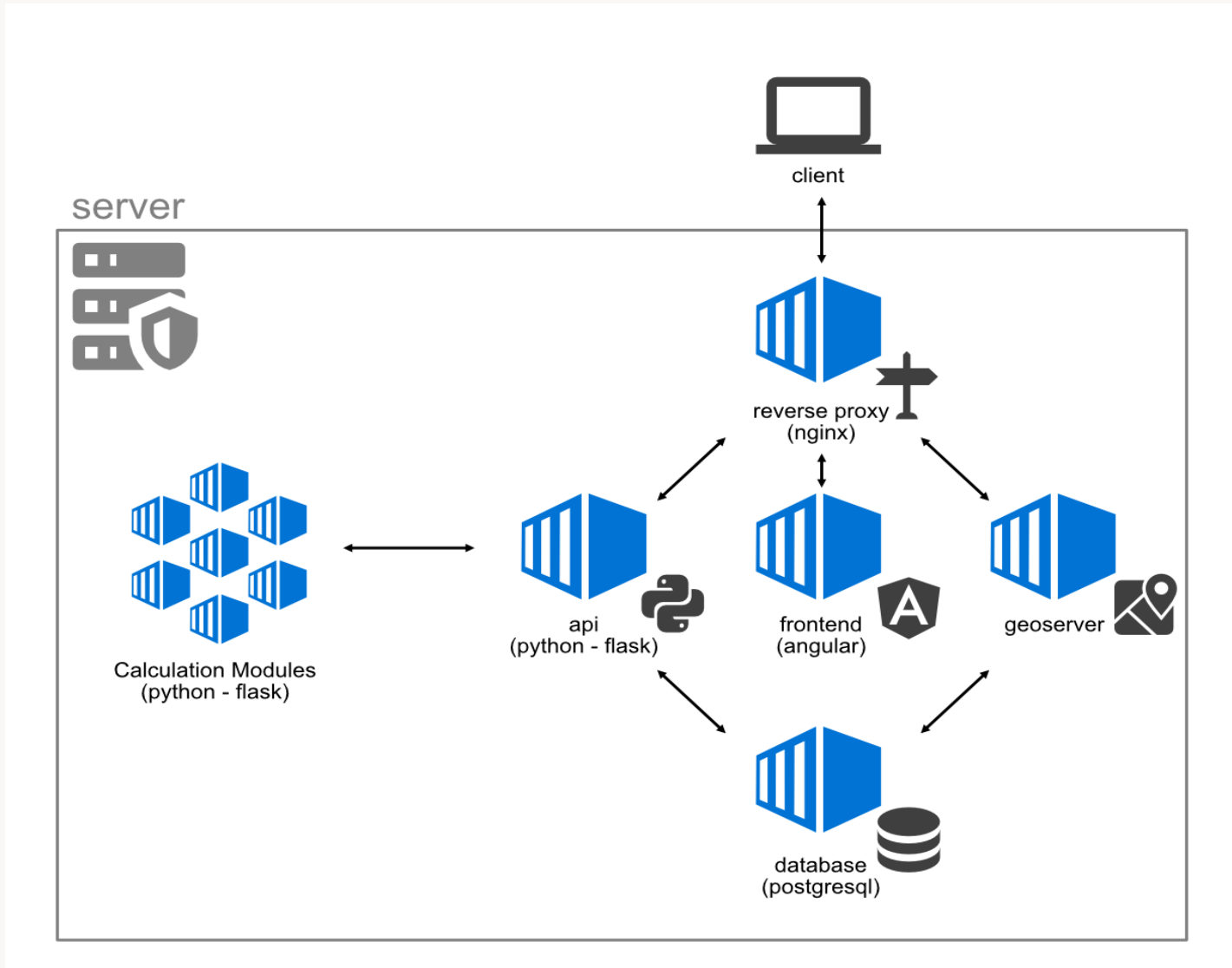
Funded by the Horizon 2020 programme  
of the European Union

Software Architecture

# IT INFRASTRUCTURE



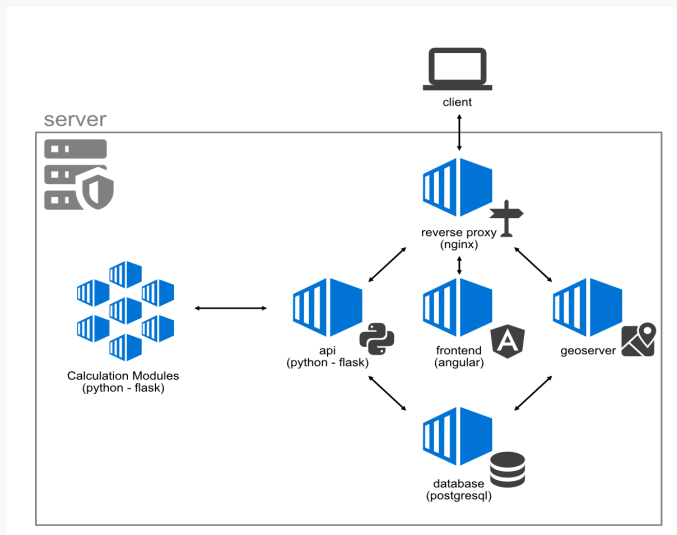
# Architecture of Hotmaps



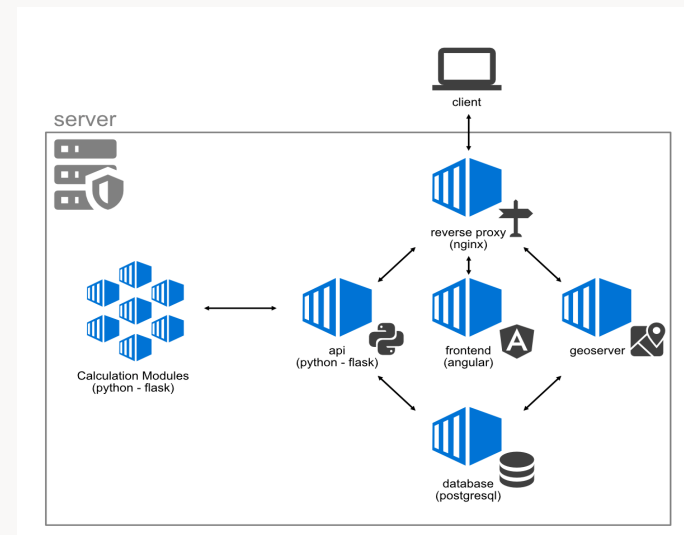


# Architecture of Hotmaps

## Development Server

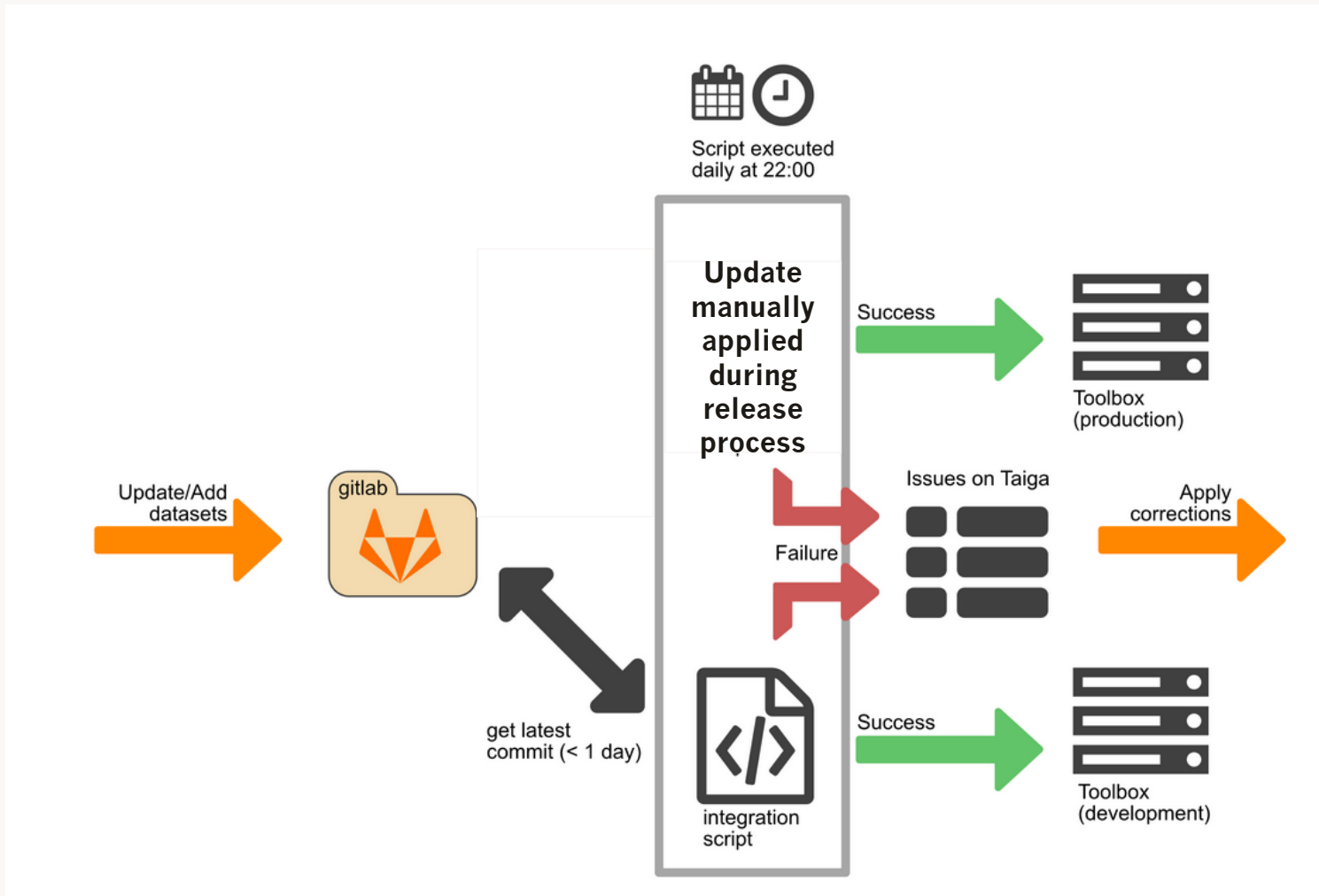


## Production Server





# Data Integration Process





Development server

# **CALCULATION MODULE INTEGRATION IN DEV**



## DEVELOPMENT SERVER

- push new code on GIT (develop branch)
- IF new CM (request to add new CM in the continuous integration process)
- Continuous integration run unit tests and execute an automatic deployment to DEV (from develop branch)
- add CM functional regression tests – run automatically every night
- run API tests (integration tests) - manually
- run LOAD tests – manually before each release production



## INVOLVEMENT OF THE USERS

- User Stories
- World Cafes
- Usability feedback through testing





Funded by the Horizon 2020 programme  
of the European Union

Pietro Zambelli (EURAC)

# **AS A CALCULATION MODULE DEVELOPER**



Funded by the Horizon 2020 programme of the European Union



**QUESTIONS ?**

