



Funded by the Horizon 2020 programme
of the European Union



H⁰TMAPS

www.hotmaps-project.eu

**JEREMY DRAPER, SUSTAINABILITY TEAM
MILTON KEYNES COUNCIL, UK
FINAL WEB CONFERENCE
30TH JUNE 2020**





Regional overview





Milton Keynes – where are we?

- ° Milton Keynes: ‘MK’
- ° 60km North of London
- ° A new city, started in 1967
- ° 265k inhabitants & growing
- ° Ambition to be a Net Zero carbon city
- ° Supportive to innovation





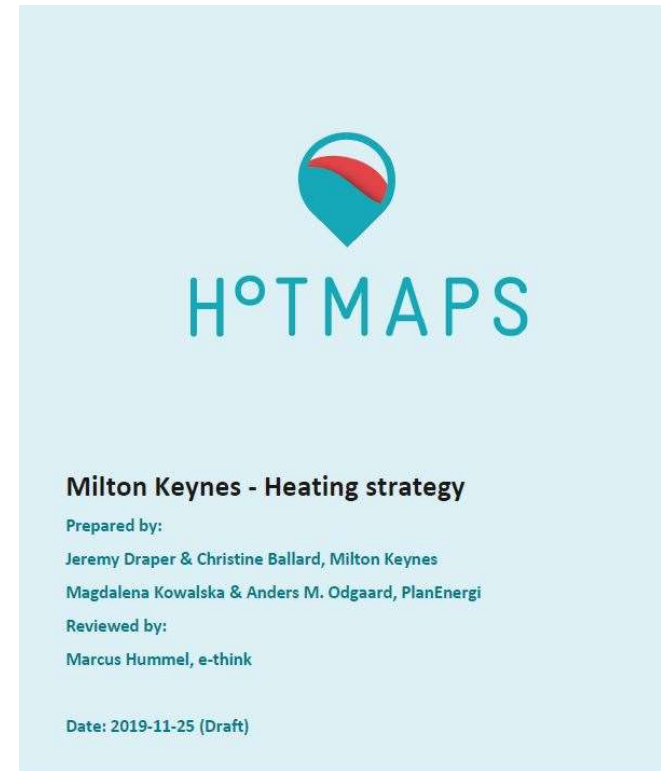
Why 'HotMaps' for us?

- MKC Sustainability policy to be Net Zero Carbon by 2030.
- HotMaps gives us the ability to quickly identify heat resources in the region and identify opportunities for detailed study.
- Compare carbon emissions of different scenarios.



Heat Strategy in MK

- The HotMaps project has helped us recognise that low carbon heat for housing and business is a major element of our city's zero carbon target.
- With much help from Planergi and HotMaps calculations, we have a heat strategy document to help our planners and developers identify opportunities



 Funded by the Horizon 2020 programme of the European Union



Questions where Hotmaps can help

- **What is the demand** for heating and cooling in my region and **where is it located?**
- **Which options are available for reducing GHG** emissions from heating and cooling in MK?
- **Which** renewable energy and excess heat **sources are economically feasible** to use MK?
- Which types of **district heating** make sense?
- Which **areas are potentially interesting for district heating?**
- Which **levels of carbon savings** could be economically feasible for Milton Keynes?

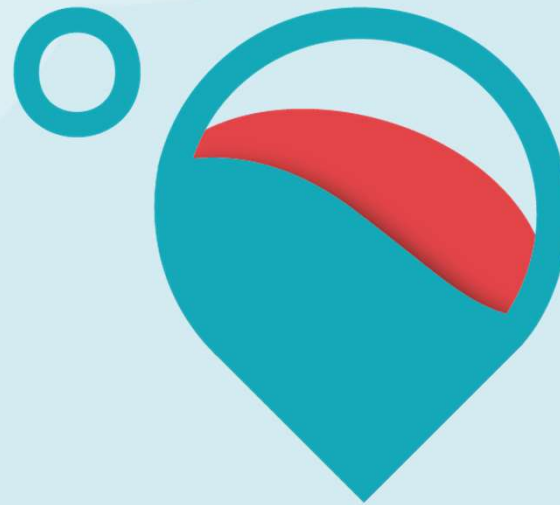


Who will use the tool?

- City planners and the environmental team
- Private Developers of new housing/commercial areas
- Heat network operators
- Students
- Environmental groups!



Funded by the Horizon 2020 programme
of the European Union



Contact

Jeremy Draper

Milton Keynes Council

Jeremy.draper@milton-keynes.gov.uk

www.hotmaps-project.eu



Supplementary info

Existing CHP network in CMK operated by Thameswey CMK Ltd:

2 x 3MW Jenbacher gas engines

100 commercial & ~1200 domestic customers within 1.5km

12GWh heat & 14GWh electrical pa

Supplies 'private wire' electricity & can operate in 'Island mode'

Planning document – Plan:MK

www.milton-keynes.gov.uk/planning-and-building/plan-mk

Sustainability Strategy - www.milton-keynes.gov.uk/environmental-health-and-trading-standards/mk-low-carbon-living/the-2019-2050-sustainability-strategy